

Institutional investors only
(not for onward distribution)

Morningstar Rating **★★★★**

Fund Manager
Vanessa Donegan
Since: 02 2002

Fund facts

Index: MSCI All Country Asia Pacific Ex-Japan
Fund size: \$1,143.49m
Launch date: 31/10/1990
Fund domicile: United Kingdom

Share class & general
Institutional I Acc USD

Period end NAV price: 2.08
Sedol: 3081079
ISIN: GB0030810799
Bloomberg: TDNASQ2:LN Equity
Reuters: 987670X.DX
MEX ID: ADAG2
WKN: 987670
Valoren: 1287532

All information expressed in USD

Contact Details

For your local office details please visit our website threadneedle.com or
Tel: +44 (0)207 464 5000
europesales@threadneedle.co.uk
clientservices@threadneedle.co.uk

Source: FactSet

All data as at 31 Mar 12
Institutional/OEIC



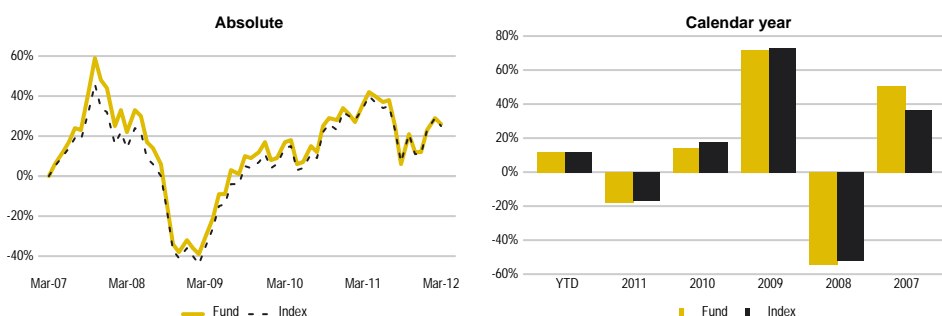
Threadneedle Asia Fund

Investment objective and policy

The Fund aims to achieve capital growth.

The Fund invests primarily in the equity of companies domiciled in Asia (with the exclusion of Japan) or with significant Asian (excluding Japan) operations. The Fund may further invest in other securities including fixed interest securities, other equities and money market securities.

5 year performance



Fund performance

	1M %	3M %	YTD %	1Y %	3Y %	5Y %	10Y %
Fund (Gross)	-2.5	12.7	12.7	-7.2	22.5	4.8	13.5
Index (Gross)	-3.0	12.5	12.5	-6.7	25.1	4.6	12.7

Periods over one year are annualised

Performance 12 months ending

	31 Mar 08	31 Mar 09	31 Mar 10	31 Mar 11	31 Mar 12
Fund	22.2%	-43.8%	70.6%	16.0%	-7.2%
Index	22.2%	-43.8%	70.6%	16.0%	-7.2%

All Performance returns shown above are gross of total expenses and are at fund level using global close authorised valuations based on in-house calculated transactions with cash flow at start of day.

Top 10 holdings

	Sector	%
SAMSUNG ELECTRONIC	Information Technology	5.6
THREADNEEDLE CH OPP-2-I-N-AGBP	Threadneedle China Opps Fund	3.9
TAIWAN SEMICON MAN	Information Technology	3.7
BHP BILLITON LTD	Materials	2.6
Australia & New Zealand Banking Group Ltd.	Financials	2.5
CNOOC LTD	Energy	2.3
Hon Hai Precision Industry Co. Ltd.	Information Technology	2.1
Commonwealth Bank of Australia	Financials	2.0
Sands China Ltd.	Consumer Discretionary	1.9
AIA Group Ltd.	Financials	1.9

Total number of stocks in portfolio: 89

Total Port % in top 10: 28.6

Past performance is not a guide to the future. The value of investments and any income from them can fall as well as rise. Copyright © 2012 Morningstar UK Ltd.

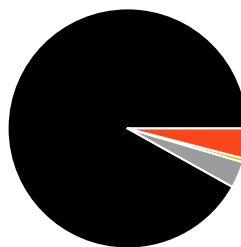
Subscriptions to a fund may only be made on the basis of current Prospectus. Investors should note the 'Risk factors' section of the Prospectus in terms of risks applicable to investing in any fund. The mention of securities is not a recommendation to deal.

Financial ratios

	Port	Index
Price/Book value	1.87x	1.68x
Price/Earnings ratio	11.60x	11.93x
Return on Equity	21.21%	18.95%

All financial ratios are based on the latest reported figures except where stated. Portfolio Characteristics and holdings are subject to change periodically and may not be representative of current characteristics. Price/Book values and Price/Earnings ratios are based on weighted harmonic average whilst the Return on Equity figure is calculated using weighted averages.

Market cap split



- Greater than 5 billion 92.0%
- Greater than 2 billion, less than 5 billion 3.5%
- Greater than 1 billion, less than 2 billion .5%
- Less than 500 million 4.0%

Top 10 overweight and underweight stock

Overweight	Port %	Index %	Sector	Country	Deviation from Index	%
THREADNEEDLE CH OPP-2-I-N-AGBP	3.9	--	Threadneedle China Opps Fund	China		3.9
SAMSUNG ELECTRONIC	5.6	3.9	Information Technology	South Korea		1.7
TAIWAN SEMICON MAN	3.7	2.0	Information Technology	Taiwan		1.7
Sands China Ltd.	1.9	0.3	Consumer Discretionary	Hong Kong		1.6
SIAM COMMERCIAL BK	1.6	0.2	Financials	Thailand		1.4
Samsung Engineering Co. Ltd.	1.5	0.2	Industrials	South Korea		1.3
CNOOC LTD	2.3	1.0	Energy	China		1.3
Keppel Corp. Ltd.	1.5	0.4	Industrials	Singapore		1.2
Hon Hai Precision Industry Co. Ltd.	2.1	1.0	Information Technology	Taiwan		1.1
Bangkok Bank PCL	1.3	0.2	Financials	Thailand		1.1
Underweight						
DBS Group Holdings Ltd.	--	0.6	Financials	Singapore		-0.6
Westfield Group Australia	--	0.6	Financials	Australia		-0.6
BHP BILLITON LTD	2.6	3.2	Materials	Australia		-0.6
POSCO	--	0.6	Materials	South Korea		-0.6
Woodside Petroleum Ltd.	--	0.7	Energy	Australia		-0.7
Bank of China Ltd.	--	0.8	Financials	China		-0.8
Tencent Holdings Ltd.	--	0.8	Information Technology	China		-0.8
Woolworths Ltd.	--	0.9	Consumer Staples	Australia		-0.9
CHINA MOBILE LTD	--	1.9	Telecommunication Services	China		-1.9
Westpac Banking Corp.	--	1.9	Financials	Australia		-1.9

Sector analysis - overweights and underweights

	Port %	Index %	Deviation from Index	%
Financials	31.6	33.3		-1.7
Information Technology	17.9	14.3		3.5
Consumer Discretionary	10.9	7.8		3.1
Materials	9.8	12.2		-2.4
Industrials	9.0	8.8		0.1
Energy	5.6	7.4		-1.7
Telecommunication Services	5.0	5.4		-0.4
Threadneedle China Opps Fund	3.9	0.0		3.9
Consumer Staples	3.6	6.1		-2.5
Utilities	1.1	3.2		-2.1
Health Care	0.0	1.5		-1.5
Cash	1.6	0.0		1.6

Country analysis - overweights and underweights

	Port %	Index %	Deviation from Index	%
China	21.7	17.9		3.8
Korea	17.5	15.7		1.8
Australia	15.7	24.8		-9.2
Taiwan	11.0	11.5		-0.4
Hong Kong	11.0	8.4		2.5
India	6.2	6.7		-0.6
Singapore	5.0	5.3		-0.3
Thailand	4.0	2.1		1.9
Indonesia	3.5	2.8		0.7
Malaysia	1.9	3.5		-1.6
Other Country	0.9	1.2		-0.2
Cash	1.6	0.0		1.6

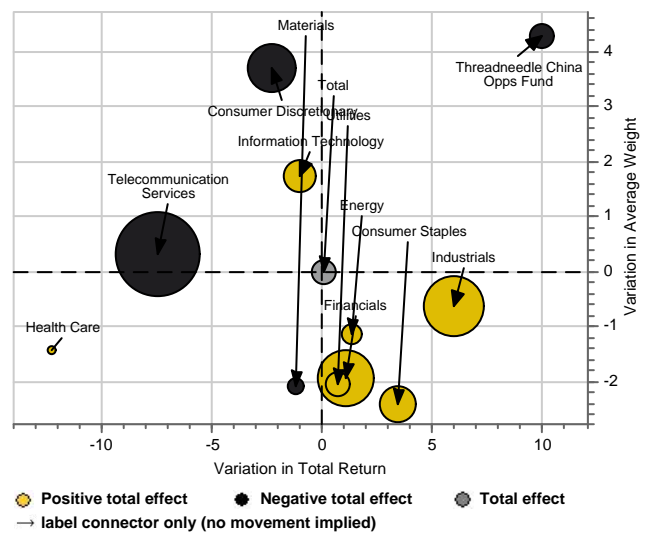
Top 5 positive/negative security attribution (three months)

Percent	Portfolio			Index		Attri.	Geo. Total Effect
	Avg. Weight	Total Return	Contr. To Return	Avg. Weight	Total Return		
5 Highest							
Sands China Ltd.	1.7	41.9	0.6	0.2	41.2	0.3	
Hon Hai Precision Industry Co. Ltd.	1.6	41.1	0.6	0.8	41.7	0.2	
ICICI Bank Ltd. ADS	1.2	31.8	0.3	--	--	0.2	
Ayala Corp.	1.0	33.4	0.3	0.0	33.5	0.2	
Samsung Electronics Co. Ltd.	5.2	22.4	1.0	3.2	23.1	0.2	
5 Lowest							
Hyundai Mobis Co. Ltd.	1.6	-0.7	0.0	0.5	0.4	-0.1	
Bank Mandiri (Persero)	1.1	0.6	0.0	0.2	0.6	-0.1	
Genting Bhd	1.3	1.8	0.0	0.2	2.0	-0.1	
Tencent Holdings Ltd.	--	--	--	0.7	38.8	-0.1	
China Unicom (Hong Kong) Ltd.	1.5	-19.7	-0.4	0.3	-19.4	-0.4	

The chart analyses the five largest positive and negative contributors to the portfolio's performance from the perspective of individual stock holdings taken from the attribution report as measured by geometric total effect. The contribution to return, as shown in the accompanying table, is the absolute contribution to the portfolio's performance being the product of the period performance of the holding and its weighting in the portfolio. The geometric total effect is the contribution to the portfolio's performance of the actual stock holding compared with what it would have been had the stock weighting been exactly in line with the index weighting for that stock calculated in a geometric basis.

Sector analysis - performance attribution (three months)

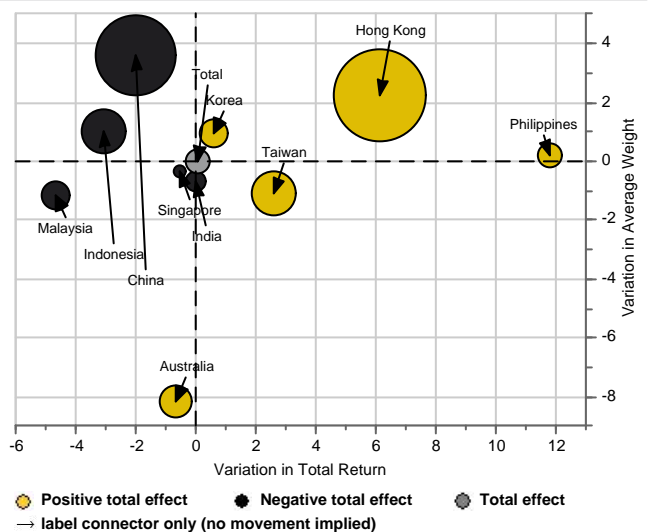
Percent	Geometric Attribution					
	Var. in Avg. Weight	Port. Total Return	Bench. Total Return	Alloc. Effect	Sele. Effect	Total Effect
Industrials	-0.6	22.6	16.7	0.0	0.4	0.3
Financials	-1.9	13.2	12.1	0.0	0.3	0.3
Consumer Staples	-2.4	10.9	7.5	0.1	0.1	0.2
Information Technology	1.7	20.1	21.1	0.2	-0.1	0.1
Utilities	-2.1	8.4	7.7	0.1	0.0	0.1
Energy	-1.2	13.4	12.0	0.0	0.1	0.1
Health Care	-1.4	--	12.2	0.0	--	0.0
Materials	-2.1	8.1	9.3	0.1	-0.1	0.0
Threadneedle China Opps Fund	4.3	9.9	--	-0.1	--	-0.1
Consumer Discretionary	3.7	9.9	12.2	0.0	-0.2	-0.3
Telecommunication Services	0.3	-1.7	5.8	-0.1	-0.4	-0.5
Total	--	12.7	12.5	0.0	0.1	0.1



Attribution calculation methodologies may result in rounding differences of total effects versus geometric total portfolio returns

Country analysis - performance attribution (three months)

Percent	Geometric Attribution					
	Var. in Avg. Weight	Port. Total Return	Bench. Total Return	Alloc. Effect	Sele. Effect	Total Effect
Top 5						
Hong Kong	2.2	19.6	13.4	0.0	0.5	0.6
Taiwan	-1.1	17.1	14.5	0.0	0.3	0.2
Australia	-8.1	8.4	9.0	0.2	-0.1	0.2
Korea	0.9	16.1	15.5	0.0	0.1	0.1
Philippines	0.2	33.4	21.6	0.0	0.1	0.1
Bottom 5						
Singapore	-0.3	18.8	19.3	0.0	0.0	0.0
India	-0.7	20.1	20.1	-0.1	0.0	-0.1
Malaysia	-1.2	3.9	8.5	0.0	-0.1	-0.1
Indonesia	1.0	1.0	4.1	-0.1	-0.1	-0.3
China	3.6	7.9	9.9	-0.1	-0.4	-0.5
Total	0.0	12.7	12.5	-0.1	0.2	0.1

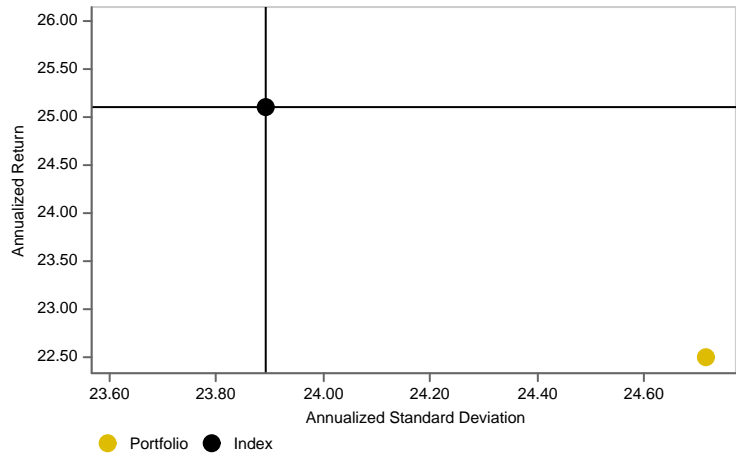


Attribution calculation methodologies may result in rounding differences of total effects versus geometric total portfolio returns

Risk Analysis

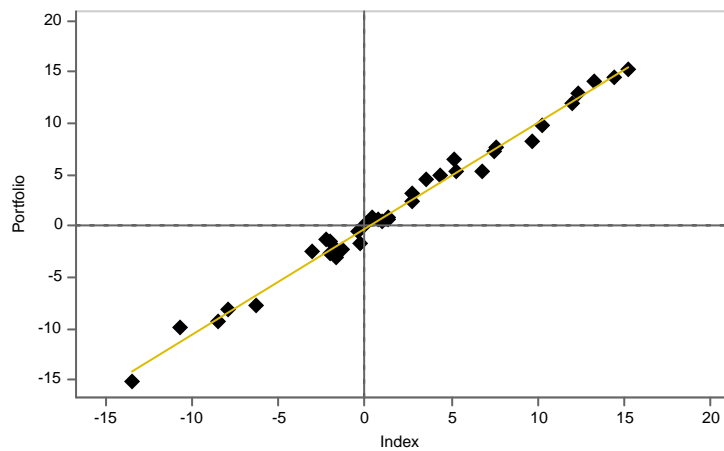
	Port	Index
Absolute Volatility	24.71%	23.89%
Relative Volatility	0.79	--
Tracking Error	2.74%	--
Sharpe Ratio	0.89	--
Information Ratio	-0.95	--
Beta	1.03	--
Sortino Ratio	1.59	--
Jensen Alpha	-3.30%	--
Annualised Alpha	-2.62%	--
Alpha	-0.22%	--
Max Drawdown	-25.42	-23.87
R²	98.85%	--

Risk/return analysis (three years)



The risk ratios and risk return analysis shown above are based on month end performance data over a three year period.

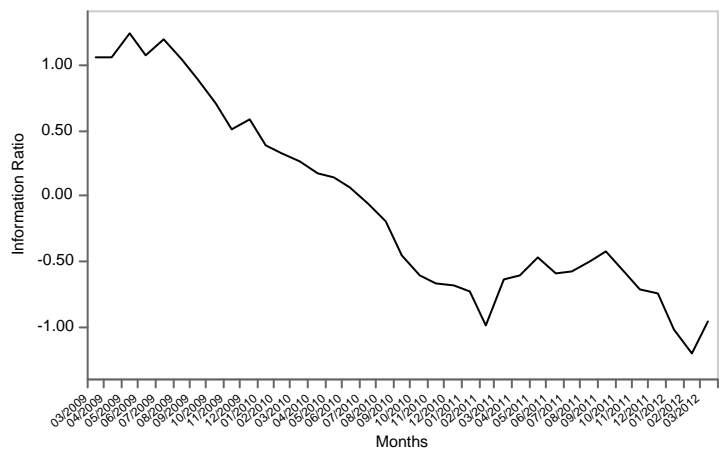
Regression Line



The regression line is calculated from the last 36 months individual data points. Each point represents the relevant monthly return of the fund and the index's corresponding return. The returns are as follows:

$$y = 1.028364x + -0.221125 \quad R^2 = 98.845352$$

Information Ratio



The information ratio is based on rolling 36 months statistics.