

Institutional investors only
(not for onward distribution)

Morningstar Rating **★★★★★**

Fund Manager
Irina Miklavchich
Since: 05 2011

Fund facts

Index: MSCI Emerging Markets
Fund size: \$228.06m
Launch date: 15/03/2006
Fund domicile: United Kingdom

Share class & general
Institutional I Acc USD

Period end NAV price: 1.35
Sedol: B119QN7
ISIN: GB00B119QN76
Bloomberg: THGEME:LL
Reuters: --
MEX ID: ADUGMQ
WKN: A0JJYM
Valoren: 2508923

Institutional X Acc USD

Period end NAV price: --
Sedol: B1DD8CO
ISIN: GB00B1DD8C08
Bloomberg: TEMKRN LN
Reuters: --
MEX ID: --
WKN: --
Valoren: --

All information expressed in USD

¹Since Inception

Contact Details

For your local office details please visit
our website threadneedle.com or
Tel: +44 (0)207 464 5000
europesales@threadneedle.co.uk
clientservices@threadneedle.co.uk

Source: FactSet

Threadneedle
Global Emerging Markets Equity Fund

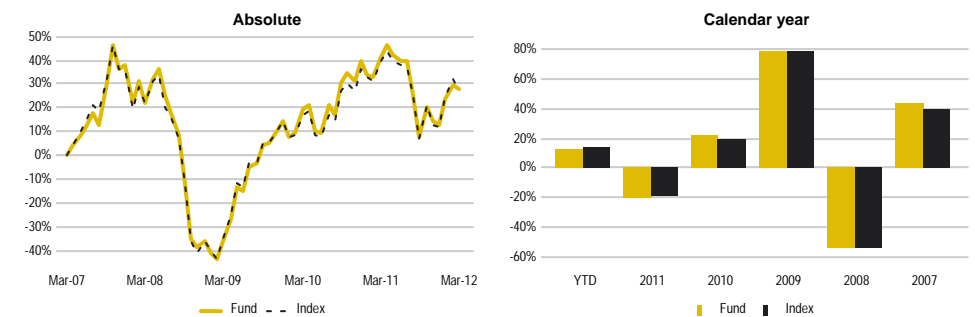
Investment objective and policy

The Fund aims to achieve long-term capital growth.

The Fund invests primarily in equities of Emerging Markets companies. These are defined as companies domiciled in and/or whose significant activities are in Emerging Market countries. Emerging Market countries are those characterised as developing or emerging by the World Bank, the United Nations or the MSCI Emerging Markets Free Index.

If desirable, the Manager may further invest up to one third of the total assets of the Fund in other securities (including fixed interest securities, other equities and money market securities). In addition, the Manager may use derivatives and forward transactions for purposes that are limited to efficient portfolio management.

5 year performance



Fund performance

	1M %	3M %	YTD %	1Y %	3Y %	5Y %	SI ¹
Fund (Gross)	-1.5	13.3	13.3	-9.7	26.0	5.0	8.7
Index (Gross)	-3.3	14.1	14.1	-8.5	25.4	5.0	7.5

Periods over one year are annualised

Performance 12 months ending

31 Mar 08	31 Mar 09	31 Mar 10	31 Mar 11	31 Mar 12
22.4%	-47.8%	87.1%	18.4%	-9.7%

All Performance returns shown above are gross of total expenses and are at fund level using global close authorised valuations based on in-house calculated transactions with cash flow at start of day.

Top 10 holdings

	Sector	%
SAMSUNG ELECTRONIC	Information Technology	4.9
TAIWAN SEMICON MAN	Information Technology	3.3
PETROL BRASILEIROS	Energy	2.9
PetroChina Co. Ltd.	Energy	2.2
Hon Hai Precision Industry Co. Ltd.	Information Technology	2.0
ITAU UNIBANCO HOLD	Financials	2.0
Naspers Ltd.	Consumer Discretionary	1.9
CIA DE BEBIDAS DAS	Consumer Staples	1.7
Turkiye Garanti Bankasi A.S.	Financials	1.6
Infosys Ltd.	Information Technology	1.6

Total number of stocks in portfolio: 114

Total Port % in top 10: 24.1

Past performance is not a guide to the future. The value of investments and any income from them can fall as well as rise. Copyright © 2012 Morningstar UK Ltd.

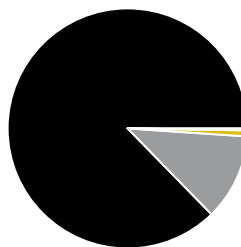
Subscriptions to a fund may only be made on the basis of current Prospectus. Investors should note the 'Risk factors' section of the Prospectus in terms of risks applicable to investing in any fund. The mention of securities is not a recommendation to deal.

Financial ratios

	Port	Index
Price/Book value	2.16x	1.68x
Price/Earnings ratio	13.69x	11.18x
Return on Equity	21.10%	19.99%

All financial ratios are based on the latest reported figures except where stated. Portfolio Characteristics and holdings are subject to change periodically and may not be representative of current characteristics. Price/Book values and Price/Earnings ratios are based on weighted harmonic average whilst the Return on Equity figure is calculated using weighted averages.

Market cap split



- Greater than 5 billion 87.4%
- Greater than 2 billion, less than 5 billion 11.4%
- Greater than 1 billion, less than 2 billion 1.0%
- Greater than 500 million, less than 1 billion .2%

Top 10 overweight and underweight stock

Overweight	Port %	Index %	Sector	Country	Deviation from Index	%
TAIWAN SEMICON MAN	3.3	1.9	Information Technology	Taiwan		1.4
Turkiye Garanti Bankasi A.S.	1.6	0.2	Financials	Turkey		1.4
PetroChina Co. Ltd.	2.2	0.8	Energy	China		1.4
Naspers Ltd.	1.9	0.6	Consumer Discretionary	South Africa		1.3
Life Healthcare Group Holdings Ltd.	1.3	0.1	Health Care	South Africa		1.3
Harmony Gold Mining Co. Ltd.	1.4	0.1	Materials	South Africa		1.3
Telekom Malaysia Bhd	1.3	0.1	Telecommunication Services	Malaysia		1.2
Hyundai Department Store Co. Ltd.	1.3	0.1	Consumer Discretionary	South Korea		1.2
Magnit	1.4	0.2	Consumer Staples	Russia		1.2
ROSNEFT OJSC	1.5	0.3	Energy	Russia		1.2
Underweight	Port %	Index %	Sector	Country	Deviation from Index	%
Sasol Ltd.	--	0.7	Energy	South Africa		-0.7
Bank of China Ltd.	--	0.7	Financials	China		-0.7
Tencent Holdings Ltd.	--	0.8	Information Technology	China		-0.8
MTN Group Ltd.	--	0.8	Telecommunication Services	South Africa		-0.8
SBERBANK OF RUSSIA	--	0.8	Financials	Russia		-0.8
BCO BRADESCO SA	--	0.9	Financials	Brazil		-0.9
Industrial & Commercial Bank of ...	--	1.1	Financials	China		-1.1
AMERICA MOVIL SAB	--	1.3	Telecommunication Services	Mexico		-1.3
GAZPROM	--	1.8	Energy	Russia		-1.8
VALE S.A.	--	2.1	Materials	Brazil		-2.1

Sector analysis - overweights and underweights

	Port %	Index %	Deviation from Index	%
Financials	19.6	23.7		-4.1
Information Technology	17.4	14.0		3.4
Consumer Discretionary	13.6	7.9		5.6
Energy	10.7	13.9		-3.2
Materials	9.5	12.9		-3.4
Consumer Staples	9.3	8.0		1.3
Telecommunication Services	8.1	8.0		0.1
Industrials	6.5	6.7		-0.2
Health Care	2.0	1.0		1.0
Utilities	0.6	3.7		-3.2
Cash	2.7	0.0		2.7

Country analysis - overweights and underweights

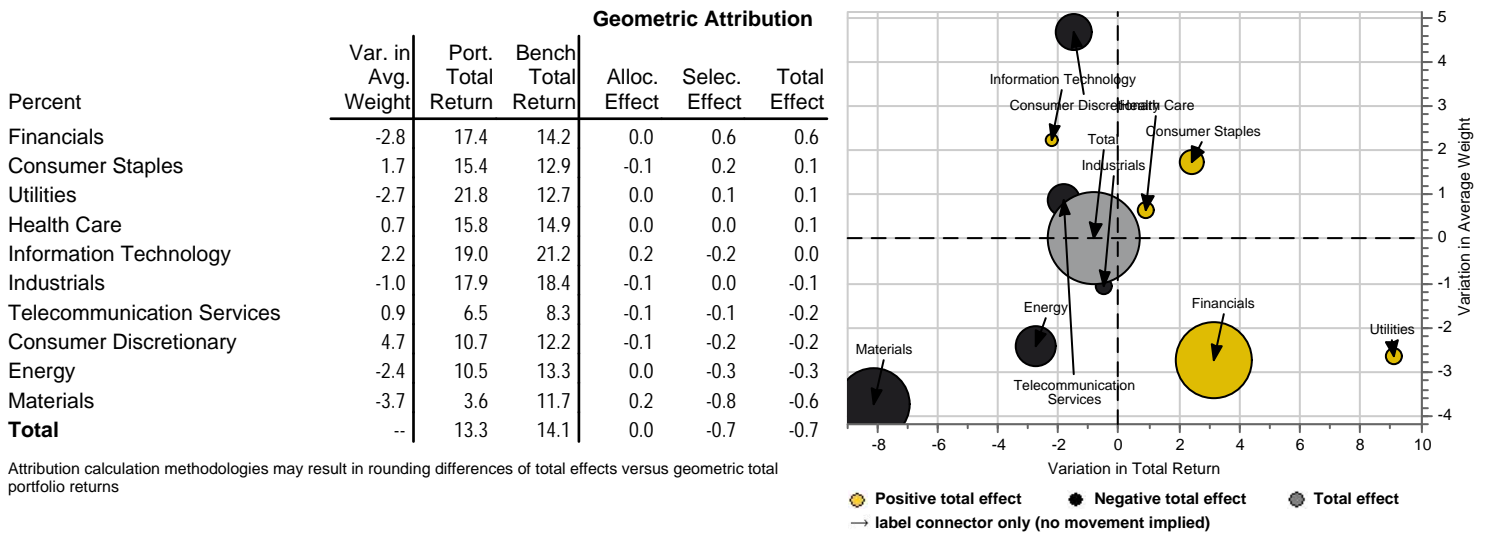
	Port %	Index %	Deviation from Index	%
Korea	15.4	15.1		0.4
China	14.5	17.2		-2.7
Brazil	11.0	14.8		-3.8
Taiwan	10.2	11.0		-0.8
Russia	7.7	6.6		1.1
South Africa	7.2	7.6		-0.4
India	6.4	6.5		0.0
Thailand	4.0	2.1		1.9
Mexico	3.5	4.7		-1.3
Turkey	3.1	1.4		1.7
Other Country	14.3	13.0		1.3
Cash	2.7	0.0		2.7

Top 5 positive/negative security attribution (three months)

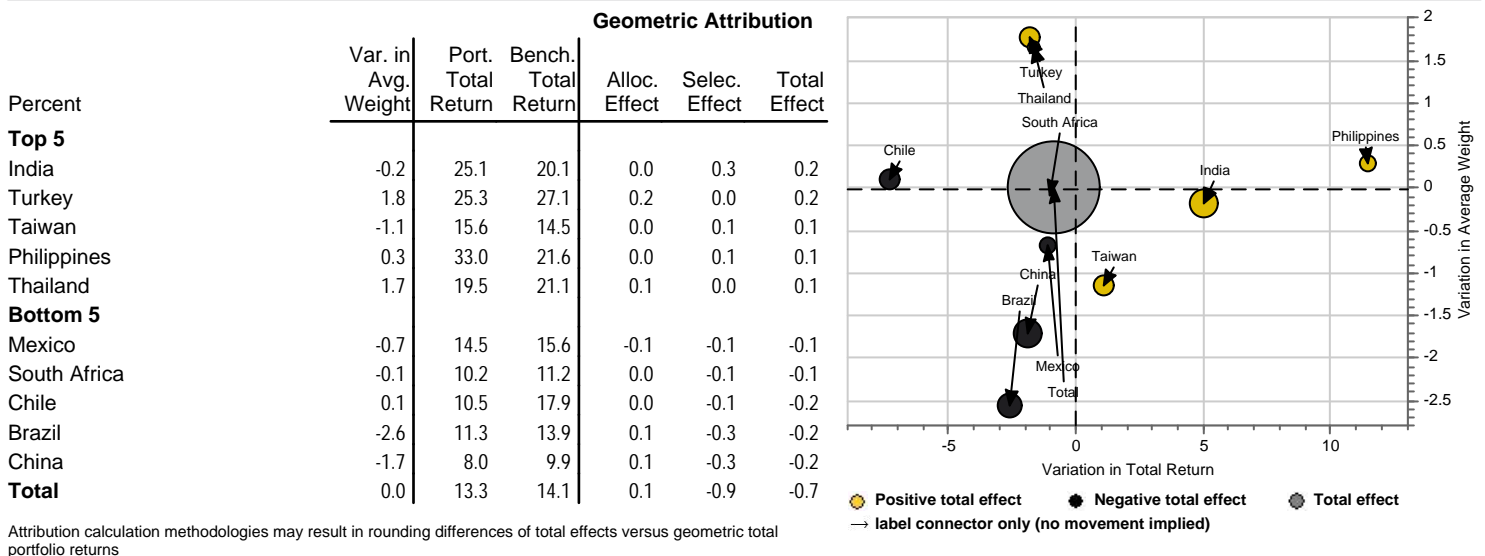
Percent	Portfolio			Index		Attri.	Geo. Total Effect
	Avg. Weight	Total Return	Contr. To Return	Avg. Weight	Total Return		
5 Highest							
Maruti Suzuki India Ltd.	0.8	52.1	0.4	0.0	53.3	0.2	
Magnit Gdr	1.3	38.1	0.5	0.2	37.7	0.2	
Companhia Hering S/A	0.9	48.1	0.3	0.1	48.5	0.2	
ICICI Bank Ltd.	1.1	35.0	0.4	0.2	35.5	0.2	
Hon Hai Precision Industry Co. Ltd.	1.4	38.4	0.5	0.8	41.7	0.2	
5 Lowest							
Genting Bhd	1.0	0.9	0.0	0.2	2.0	-0.2	
China Unicom (Hong Kong) Ltd. ADS	0.4	-18.2	-0.1	--	--	-0.2	
Petrobras Petroleo Brasileiro ADR	3.2	6.9	0.3	--	--	-0.2	
Polymetal International PLC	0.9	-15.7	-0.1	--	--	-0.2	
China Unicom (Hong Kong) Ltd.	1.1	-20.9	-0.3	0.3	-19.4	-0.3	

The chart analyses the five largest positive and negative contributors to the portfolio's performance from the perspective of individual stock holdings taken from the attribution report as measured by geometric total effect. The contribution to return, as shown in the accompanying table, is the absolute contribution to the portfolio's performance being the product of the period performance of the holding and its weighting in the portfolio. The geometric total effect is the contribution to the portfolio's performance of the actual stock holding compared with what it would have been had the stock weighting been exactly in line with the index weighting for that stock calculated in a geometric basis.

Sector analysis - performance attribution (three months)



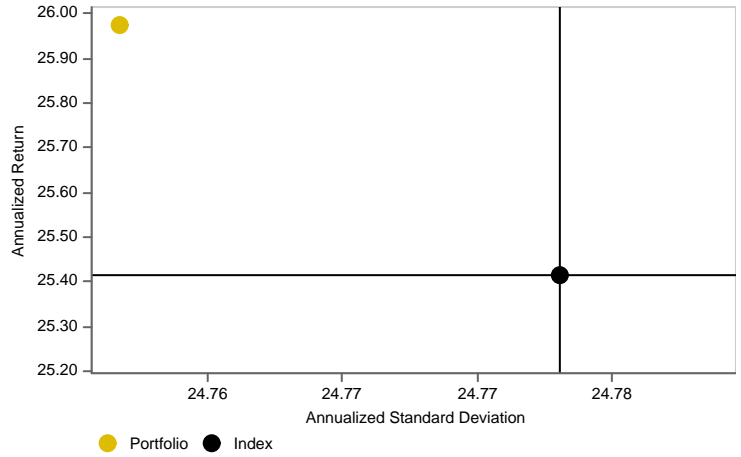
Country analysis - performance attribution (three months)



Risk Analysis

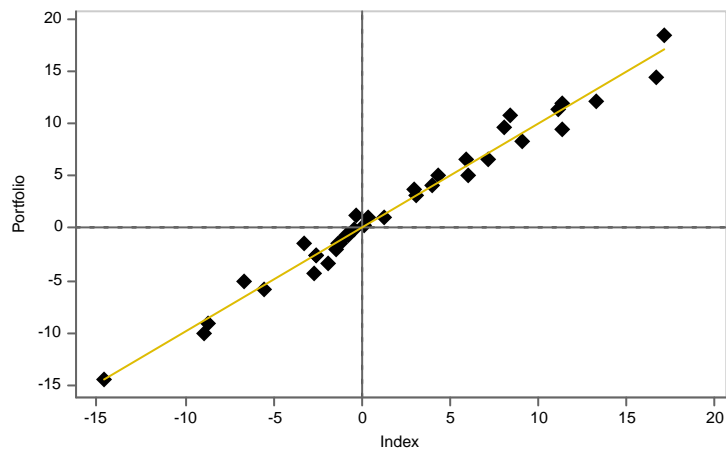
	Port	Index
Absolute Volatility	24.76%	24.77%
Relative Volatility	1.00	--
Tracking Error	3.63%	--
Sharpe Ratio	1.03	--
Information Ratio	0.15	--
Beta	0.99	--
Sortino Ratio	1.97	--
Jensen Alpha	0.84%	--
Annualised Alpha	0.76%	--
Alpha	0.06%	--
Max Drawdown	-26.45	-25.59
R²	97.86%	--

Risk/return analysis (three years)



The risk ratios and risk return analysis shown above are based on month end performance data over a three year period.

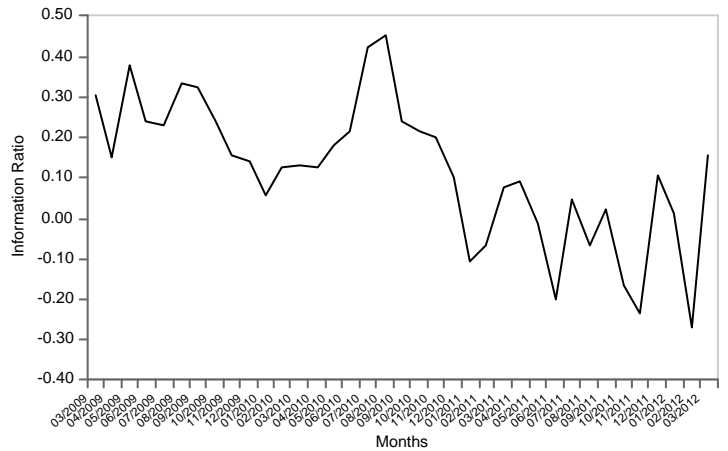
Regression Line



The regression line is calculated from the last 36 months individual data points. Each point represents the relevant monthly return of the fund and the index's corresponding return. The returns are as follows:

$$y = 0.988580x + 0.062755 \quad R^2 = 97.857330$$

Information Ratio



The information ratio is based on rolling 36 months statistics.